

SKILL LEVEL



BEGINNER

multisized
pattern...sizes
6/8/10/12/14/16
/18/20/22/24/26
all together!

*www.hotpatterns.com*tm
patterns so hot they're smokin'...



HotPatterns & fabric.com exclusive download
Cascade-Cozy Shrug



L-O-V-E this gorgeously drape-y Shrug, designed for fluid knits... think silk, cotton modal, bamboo, or rayon jersey, or even try a slinky lightweight sweater knit. Relaxed-fit, hip-length dolman-sleeved Shrug has a cascade front and above-elbow length sleeves. The front cascade, hem and sleeves are simply finished with a narrow hem for a slick finish, or left raw for a more edgy deconstructed look. Use this fabulously pretty shrug to add a little festive glamour to a classic pants-and-T-shirt look, or slip it on over your favorite LBD for a little extra warmth and coverage on a chilly evening.

Hot Patterns & fabric.com

exclusive free download cozy-cascade shrug instructions page 1 of 2

SEAM ALLOWANCES & OTHER INFO

Seam allowances are 3/8" or 1cm wide;
all seams are sewn right sides together unless
otherwise stated.

The neckline, sleeve & body hems have a 3/8" or 1cm
deep hem allowance...you can finish these edges with
a narrow hem, or leave them raw for a deconstructed look.

Skills needed include: sewing with knits & working a hem

ABOUT THIS STYLE

The Shrug has a relaxed dolman-sleeved silhouette,
with an attached cascade style front drape.

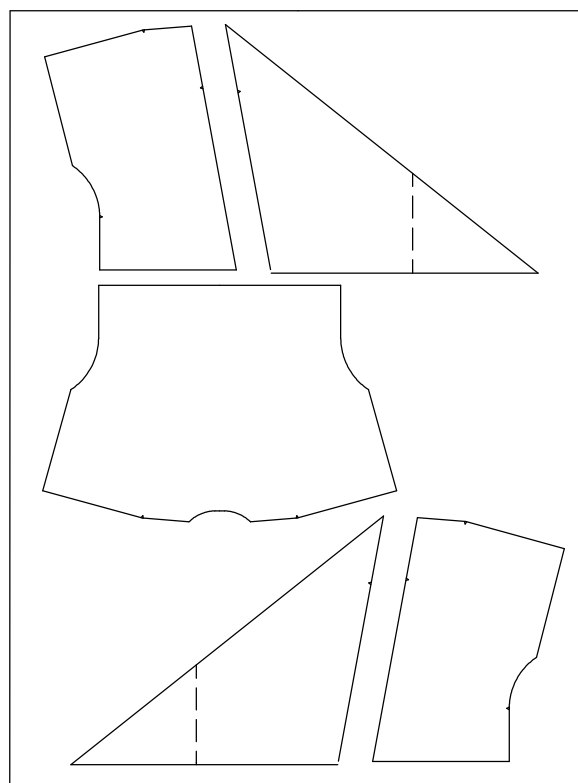
Oh yes, as always, make & fit a muslin before
you cut into your fabric...in this case, use a cheap
knit fabric with a similar drape to your chosen fabric.

IMPORTANT

Before you cut your fabric,
PLEASE make sure that you
join the pattern pieces for the
cascade. Join them along the
dashed lines as marked
on the pattern pieces.

SUGGESTED CUTTING LAYOUT FOR THE SHRUG

unfold the fabric so it lays flat for this layout



NARROW HEM Vs RAW EDGE FINISH

To finish the hems and neckline on this garment, you can EITHER
work a narrow hem around these edges OR do a 'raw edge' finish.

For a narrow hemmed edge: sew a line of straight stitches along the edge
of the fabric, about 1/8" or 3mm in from the cut edge. Press the edges
under along this line of stitching, then press this folded edge under
1/4" or .5 cm. Hem along this double-folded edge. Press flat...done!

For a raw edge finish: sew a line of straight stitches along the edge
of the fabric, about 1/2" or 1.25cm in from the cut edge. Trim about 3/8"
or 1cm from the edges...use pinking shears for a deconstructed look.
Press flat, and you're done!

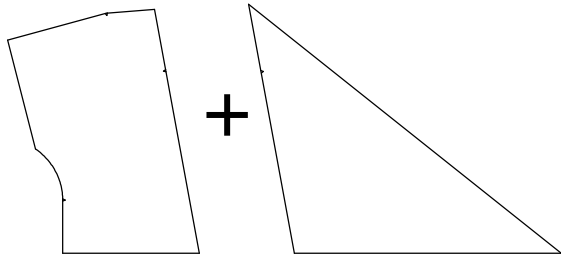
FABRIC REQUIRED

All sizes need around 2 yards/185 cm of
60"/150cm wide knit fabric for the shrug.

instructions page 2 of 2

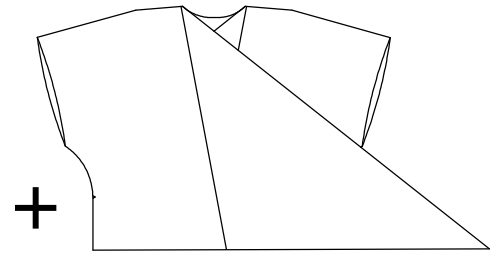
1

Join the cascade pieces to the fronts, making sure that you match the notches. Press the seams open, then press both seam allowances towards the center front.



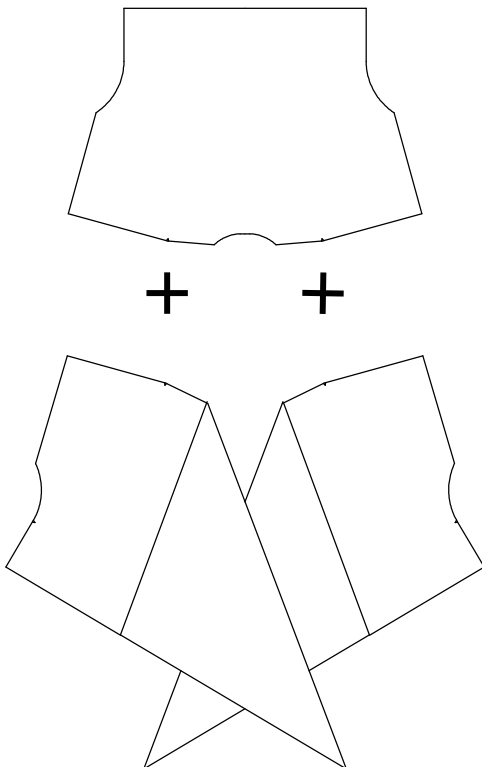
3

Join the fronts to the back along the side/underarm seams. Press the seams open.



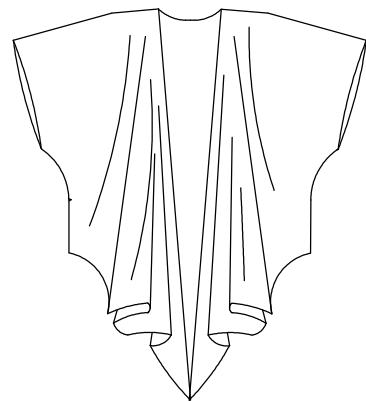
2

Join the fronts to the back at the shoulder seams. Press the seams open.



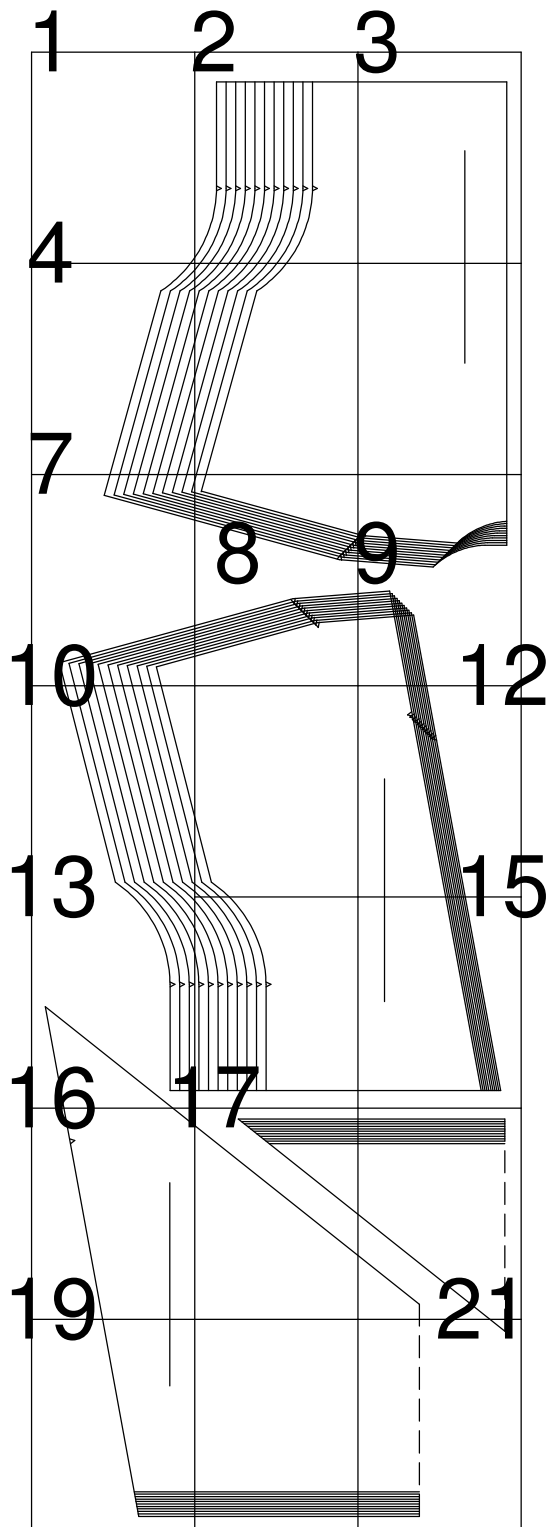
4

Work a narrow hem OR a raw edge finish along the sleeve and body hems, the back neckline and the front edges.



Cozy, and totally beautiful!

1



4

SIZE 24
26

7

SIZE 26

SIZE 24

SIZE 22

SIZE 20

SIZE 18

SIZE 16

SIZE 14

SIZE 12

SIZE 10

SIZE 8

SIZE 6

SIZE

SIZE

SIZE

SIZE

SIZE

SIZE

SIZE

SIZE

SIZE

SIZE

SIZE

ZE 6
ZE 8
ZE 10
ZE 12
ZE 14
ZE 16
ZE 18
ZE 20
ZE 22
ZE 24
ZE 26

10

13

SIZE 26
SIZE 24
SIZE 22
SIZE 20
SIZE 18
SIZE 16
SIZE 14

SIZE 26
SIZE 24
SIZE 22
SIZE 20

16



19

2

SIZE 6

SIZE 8

SIZE 10

SIZE 12

SIZE 14

SIZE 16

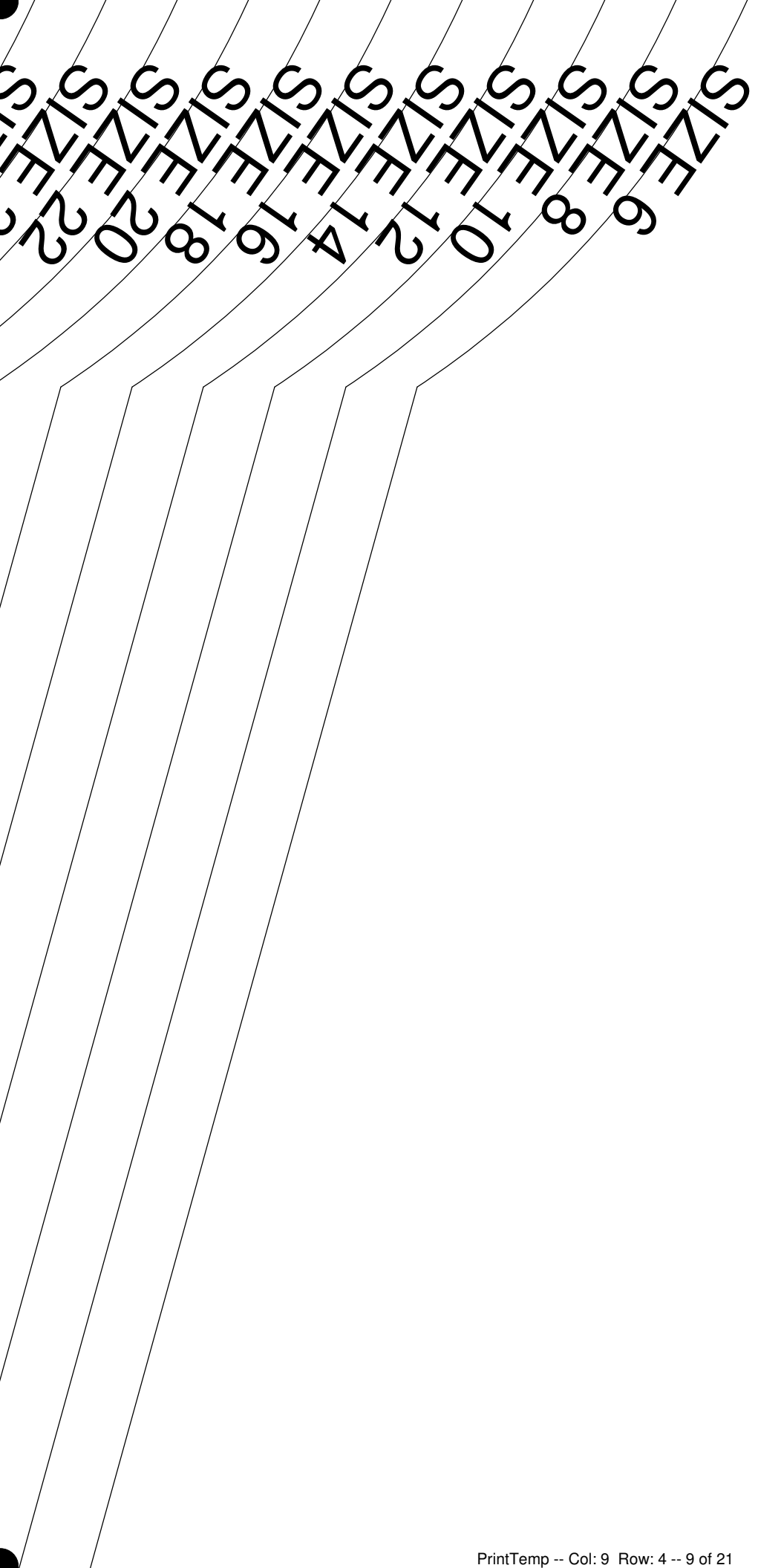
SIZE 18

SIZE 20

SIZE 22

SIZE 24

SIZE 26

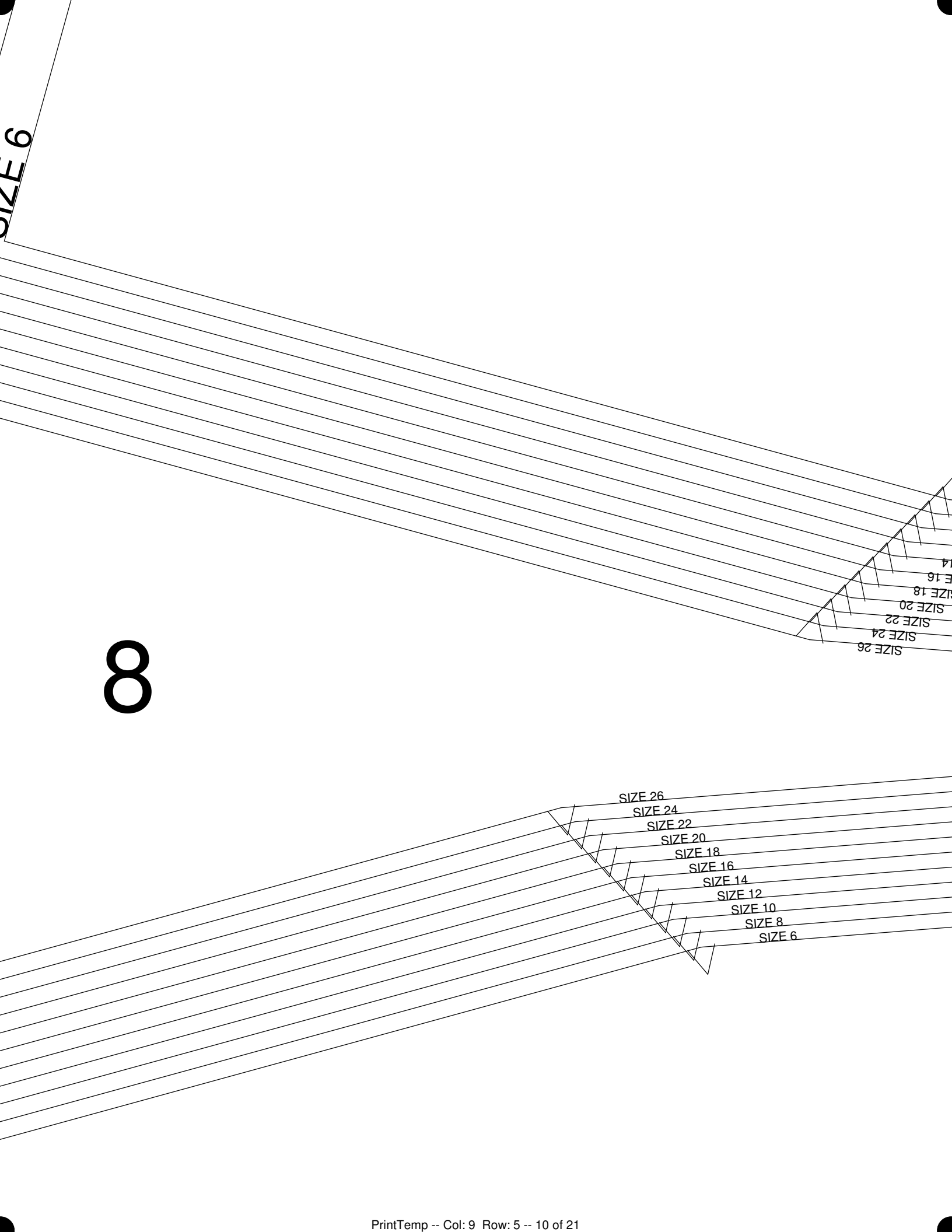


<<NOTION>>

abric

group
unload

abric.com



8

SIZE 6

SIZE 26
SIZE 24
SIZE 22
SIZE 20
SIZE 18
SIZE 16
SIZE 14

SIZE 26
SIZE 24
SIZE 22
SIZE 20
SIZE 18
SIZE 16
SIZE 14
SIZE 12
SIZE 10
SIZE 8
SIZE 6

HotPatterns & fabric.com

exclusive free download

cascade-cozy shrug

front

cut 1 pair in fabric

<<<STRETCH DIRECTION>>>

SIZE 20
SIZE 18
SIZE 16
SIZE 14
SIZE 12
SIZE 10
SIZE 8
SIZE 6

SIZE 12
SIZE 10
SIZE 8
SIZE 6
SIZE 6

17

SIZE 26
SIZE 24
SIZE 22
SIZE 20
SIZE 18
SIZE 16
SIZE 14
SIZE 12
SIZE 10
SIZE 8
SIZE 6

exclusive free download
cascade-cozy shrug
front cascade
cut 1 pair in fabric

<<<STRETCH DIRECTION>>>

SIZE 6
SIZE 8
SIZE 10
SIZE 12
SIZE 14
SIZE 16
SIZE 18
SIZE 20
SIZE 22
SIZE 24
SIZE 26

3

Hot Patterns & fa

exclusive free download
cascade-cozy s
back
cut 1 on fold in t

<<STRETCH DIRECT

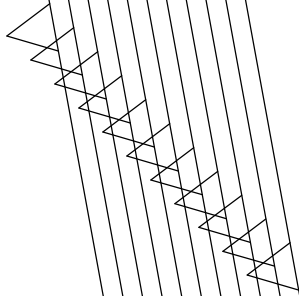
SIZE 26
SIZE 24
SIZE 22
SIZE 20
SIZE 18
SIZE 16
SIZE 14
SIZE 12
SIZE 10
SIZE 8
SIZE 6

9

SIZE 26
SIZE 24
SIZE 22
SIZE 20
SIZE 18
SIZE 16
SIZE 14
SIZE 12
SIZE 10
SIZE 8
SIZE 6

SIZE 26
SIZE 24
SIZE 22
SIZE 20
SIZE 18
SIZE 16
SIZE 14
SIZE 12
SIZE 10
SIZE 8
SIZE 6

12



15

SIZE 26
SIZE 24
SIZE 22
SIZE 20
SIZE 18
SIZE 16
SIZE 14
SIZE 12
SIZE 10
SIZE 8
SIZE 6

to this pattern piece, along the dashed line

before you cut your fabric, join this pattern piece

21