

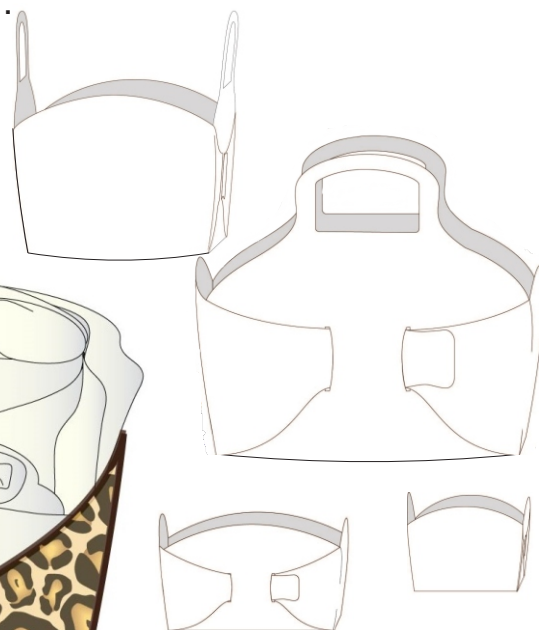
SKILL LEVEL



BEGINNER

large basket box is
16"/15.25cm wide
12"/6.5cm deep
& 10"/25cm high;
baby box is
8"/20cm wide,
6"/15.25cm deep
& 5"/12.5cm high

*www.hotpatterns.com*tm
patterns so hot they're smokin'...



You *know* you
can always use
extra storage, and
these cool boxes can
be packed away flat
when you're not using them.

Designed for heavy or medium weight
non-fraying fabrics like heavy faux
leather, felt or home dec fabrics, these
take little to no actual sewing. You can
also use medium weight wovens with

binding to finish the edges-a small sewing investment for fabulous results!
Boxes are simply folded & slotted together through the sides. The big
basket box has cut-on handles and is perfect for storing magazines, small
toys, balls of yarn or towels; the baby basket is just right for those smaller
goodies that always need a home...hair accessories, toiletries, crayons,
whatever you need to organize your bathroom, bedroom, or sewing space!

HotPatterns & fabric.com exclusive download
Boxing Clever Foldable Storage

Hot Patterns & fabric.com

exclusive free download boxing clever folded storage
instructions page 1 of 2

SEAM ALLOWANCES & OTHER INFO

There are no seam allowances on these boxes!

How you construct the box(es) depends entirely on the fabric you choose...

...use a heavy real/faux leather or felt, and there is no sewing to be done at all. None, seriously.

...use a medium-weight real/faux leather or felt, and you'll simply be sewing a line around the outer edges.

...use a medium-weight woven fabric, and you'll bind the outer edges with self or contrast bias binding.

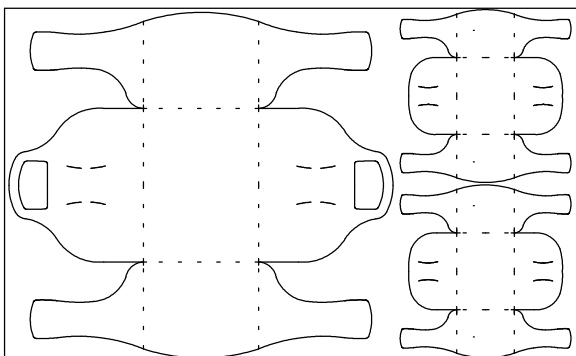
Skills needed include: OPTIONAL applying interfacing; (making &) applying bias binding.

ABOUT THESE STYLES

These boxes are simply cut and folded together; sewing is only necessary to finish the cut edges in certain fabrics-please see the instructions for more details.

SUGGESTED FABRIC CUTTING LAYOUT FOR THE BOXES

lay fabric out flat for this layout



FABRIC & NOTIONS REQUIRED

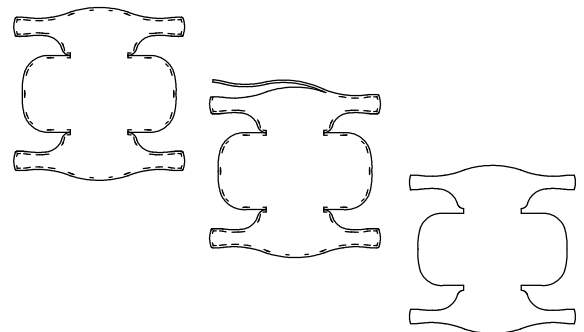
1 yard/92cm of 60"/150cm wide fabric will yield one large basket box and two baby boxes; if you need to use two layers of fabric add 1 more yard/92cms, and 1 yard/92cms very firm fusible interfacing.

If you are binding the box edges, you'll need 7 yards/640cm self or contrast purchased or made bias binding for the large basket box; each baby box requires 3 yards/275cm binding.

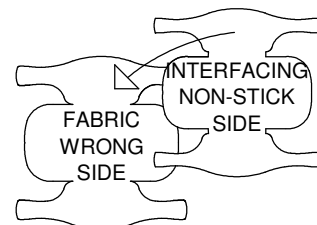
1 If you are using a single layer of heavy weight real/faux leather or felt (so, a non-fraying fabric) then go ahead and simply cut out your box(es) carefully and skip on over to steps 4a, 4b, 4c, 4d & 4e.

2a If you are using a double layer of medium-weight real/faux leather or felt (so, a non-fraying fabric) cut out two layers of fabric per box, plus 1 layer of fusible interfacing.

2b Mark off & trim a scant 1/4" or 0.75cm from all edges of the interfacing, including the handles if you are making the basket box.

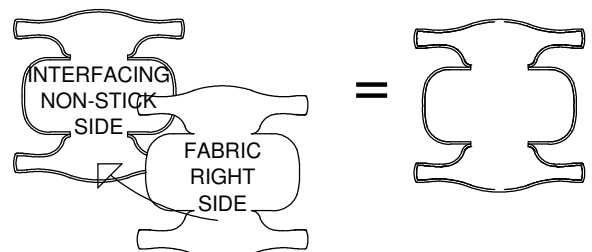


2c Apply the trimmed interfacing to the **WRONG** side of one of the fabric layers, making sure that you center it up evenly!

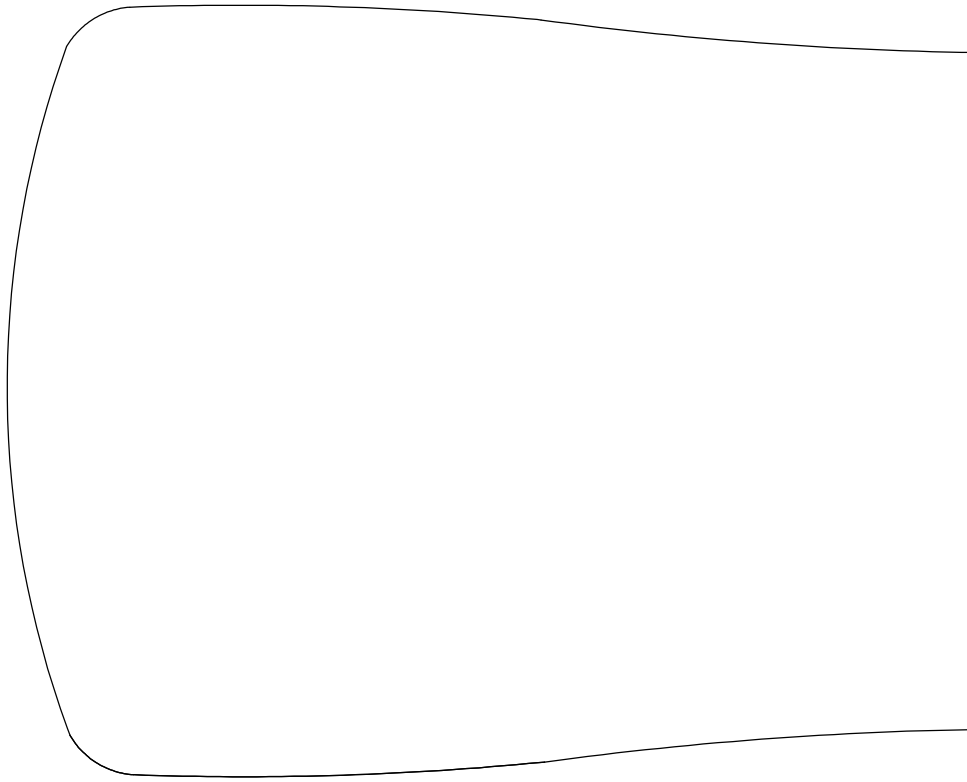


2d **WRONG** sides together, sew through both layers of fabric, about 3/8" or 1cm away from the cut edges.

To complete the box(es), go to steps 4a, 4b, 4c, 4d & 4e.



4



9

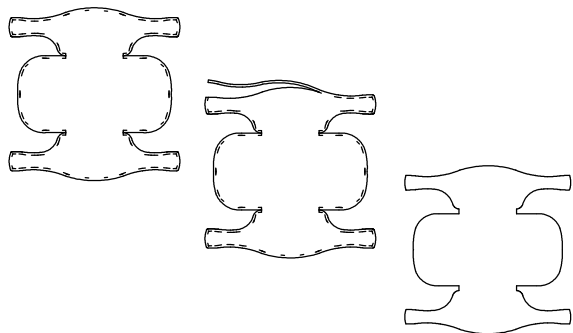


mark
on the

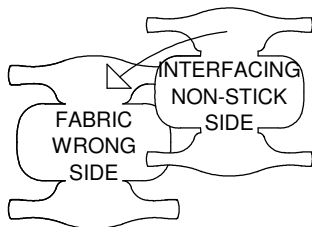
instructions page 2 of 2

3a If you are using a double layer of medium-weight woven fabric (so, a fabric that frays) cut out two layers of fabric per box, plus 1 layer of fusible interfacing.

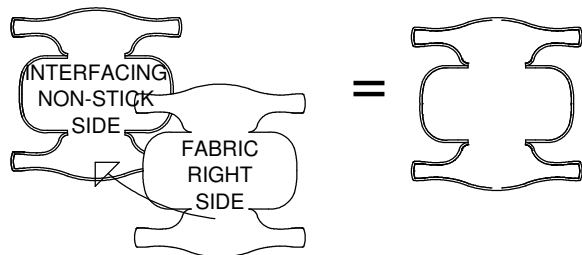
3b Mark off & trim a scant 1/4" or 0.75cm from all edges of the interfacing, including the handles if you are making the basket box.



3c Apply the trimmed interfacing to the **WRONG** side of one of the fabric layers, making sure that you center it up evenly!



3d **WRONG** sides together, sew through both layers of fabric, about 3/8" or 1cm away from the cut edges.



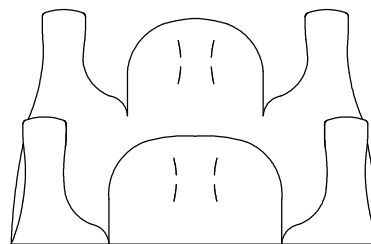
3d To complete the box(es), you'll need to bind the edges.

Using purchased or self-made bias binding, sew the binding onto the **WRONG** or inside of the box(es). Fold the binding over the cut edges and stitch the remaining edge if the binding is down.

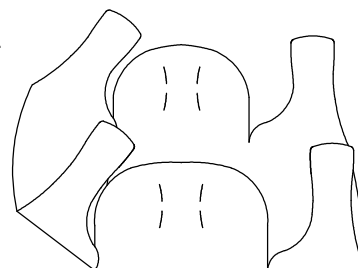
Work a row of zig-zag or buttonhole stitches around the slits **BEFORE** you cut them.

To finish up, go to steps 4a, 4b, 4c, 4d & 4e.

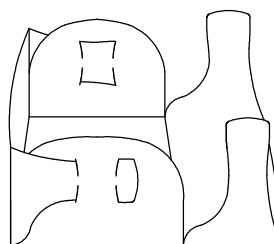
4a Lay the box(es) out like this.



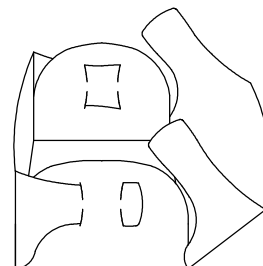
4b ...fold one side up like this...



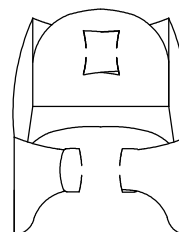
4c ...and feed the tabs through the slits like this...



4d ...repeat this with the remaining tabs on the other side...



4e ...et voila! gorgeous foldable storage...



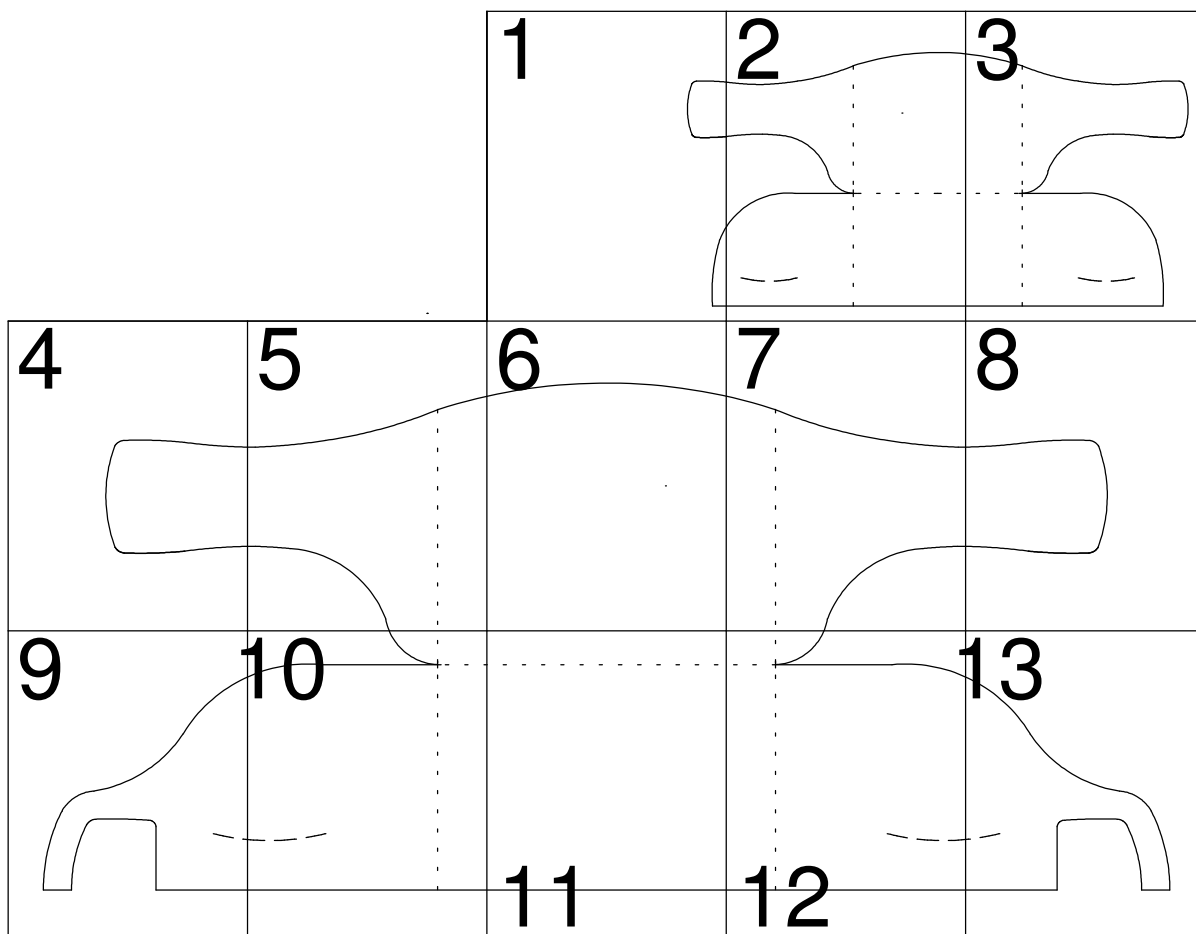
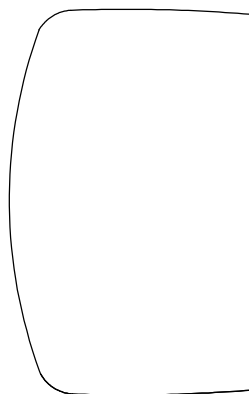
5 *PLEASE NOTE* if your tabs 'slip' a little, you can glue some hook & loop dots behind the tabs for extra grip.

5

FOLD ALONG THIS LINE

10

κ this cut line
WRONG SIDE



Hot Patterns

free download exclusively for

fabric.com

boxing clever foldable storage

big box basket

cut 1 on fold in heavy (p)leather or felt

OR cut 2 layers on fold in fabric

plus 1 layer on fold in heavy interfacing

FOLD ALONG THIS LINE

FOLD

11

2

FOLD ALONG THIS LINE

Hot Patterns

free download exclusive

fabric.com

boxing clever foldable s
baby box

cut 1 on fold in heavy (p)lea
OR cut 2 layers on fold in
plus 1 layer on fold in inte

FOLD ALONG THIS LINE

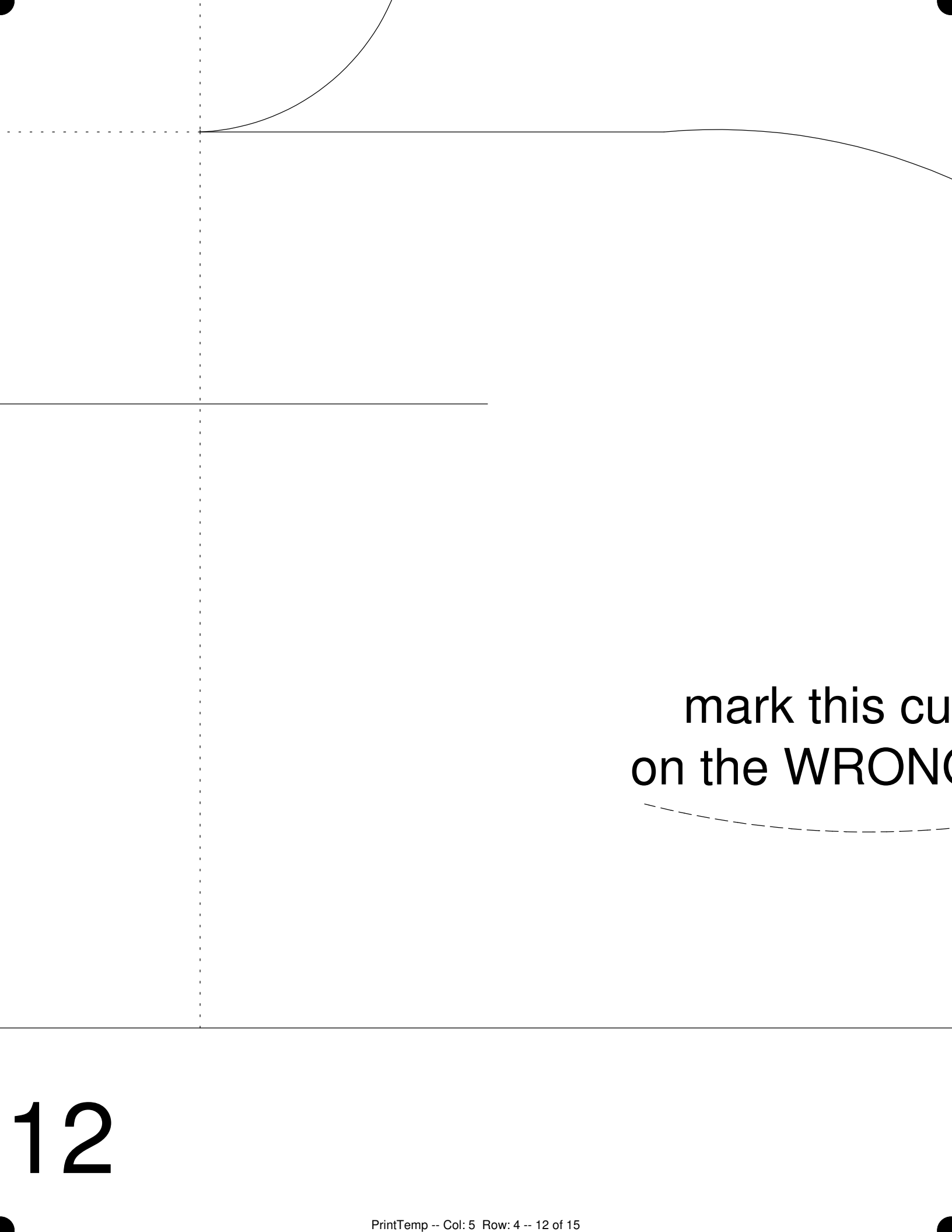
mark this cut line
on the WRONG SIDE



FOLD

7

FOLD ALONG THIS LINE



mark this cu
on the WRONG

12

3

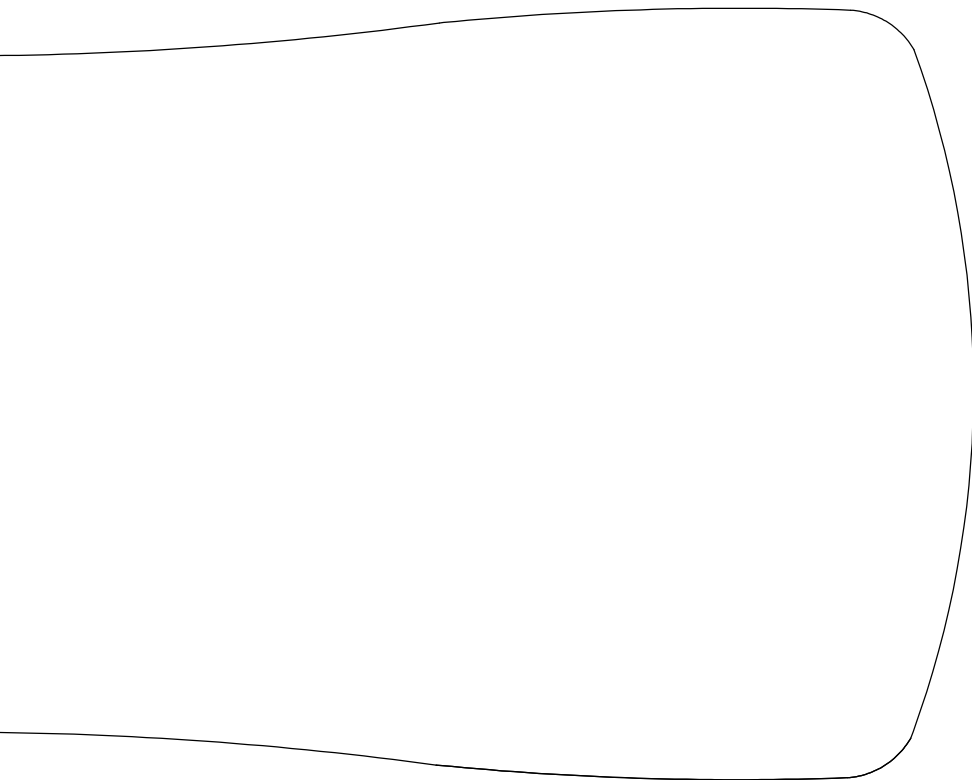
ns
ely for
om
storage
ther or felt
n fabric
erfacing

FOLD ALONG THIS LINE

mark this cut line
on the WRONG SIDE



8



13

t line
G SIDE

