

SKILL LEVEL

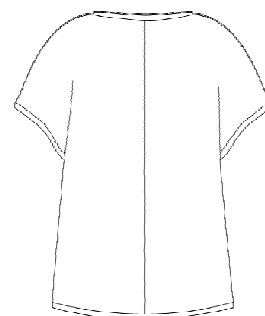
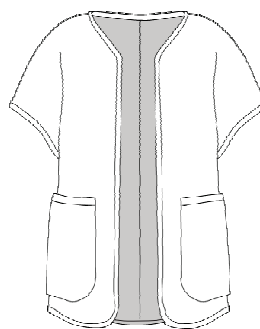


BEGINNER

multisized  
pattern...sizes  
6/8/10/12/14/16  
/18/20/22/24/26  
all together!

*www.hotpatterns.com*<sup>tm</sup>  
patterns so hot they're smokin'...

HotPatterns & fabric.com exclusive download  
Baby, It's Cold Outside Vest



No need to feel any of those pesky Winter chills in this snugly-stylish and super-wearable vest, designed for real or faux shearling, suede, heavy double knit, stable sweater knits, sweat-shirting or even fleece. Relaxed-fit Vest has cut-on sleeves with a deep armhole and a shaped center back seam. Vest features patch pockets and and edge-to-edge front closure, with a high 'V' neck and gently curved front hem. Neckline, center fronts, sleeve edges, hemline and pocket openings are all finished with a contrast woven bias trim.

This chic little number will be a perfect addition to your cold-weather wardrobe; try it over your favorite dressy jeans and a skinny sweater for simple chic, or layer it over a chunky knit and some cool corduroy pants for the ultimate in cozy dressing.

# Hot Patterns & fabric.com

## exclusive free download baby, it's cold outside vest instructions page 1 of 2

### SEAM ALLOWANCES & OTHER INFO

Seam allowances are 3/8" wide; there are no seam/hem allowances along the front & back necklines, the center front, the hem and the sleeve & pocket openings.

All seams are sewn right sides together unless otherwise stated.

Skills needed include: applying a deep bias binding to neck, hem, pockets and armholes; making & applying patch pockets.

### ABOUT THIS STYLE

This Vest has a relaxed fit, with all outer edges finished with purchased or self-made woven contrast bias binding.

We usually recommend making a muslin before you cut your fabric; but as this is such a simple and unfitted style, you're probably better off just 'going for it' and adjusting as you go!

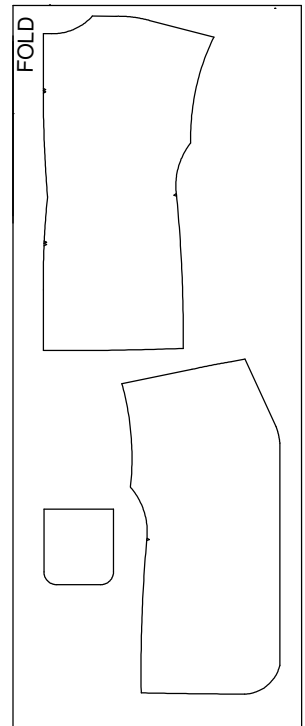
SUGGESTED FABRIC CUTTING  
LAYOUT FOR VEST  
fold fabric in half from selvage to  
selvage for this layout

### FABRIC REQUIRED

All sizes need around 2.25 yards/92 cm  
of 60"/150cm wide fabric for the vest.

If you are making your bias binding,  
you'll need about 1yard/92cm of  
60"/150cm wide contrast woven fabric;  
if you are using purchased bias binding,  
you'll need about 6 yards/5.5mm of  
3/4"/2cm wide bias binding.

If you are lining your pockets, you'll need a  
scrap of lining, about 18"/25cm X 12"/30cm.

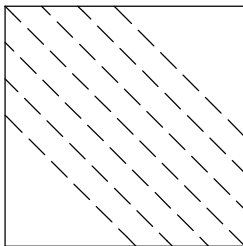


1a

### MAKING BIAS BINDING

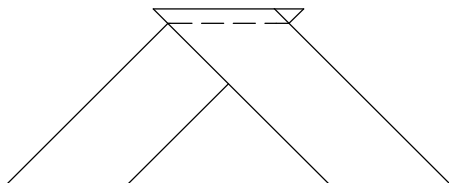
You can use purchased bias binding to complete this vest,  
but it's so easy to make your own!

First cut some bias strips..we cut ours 2.25" or xxcm wide,  
which will give a finished binding of 3/4" or 2cm wide...perfect!



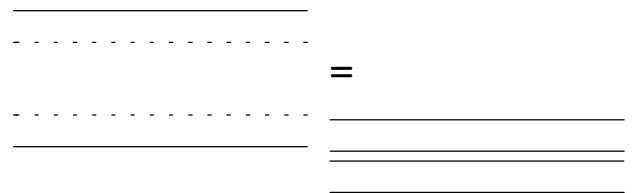
1b

Join the bias trim into long strips...you'll need a piece about  
15" or 38cm long for the pocket edges, a piece about  
52" or 130cm long for the sleeve/armhole openings,  
plus one l-o-n-g piece about 150" or 385cm long  
for the neck/hemline. Press all the seams open.



1c

Press the long edges of the binding under 3/8" or 1cm...



1d

...and sew the binding on, stitching along one of the  
pressed creases...

stitch along this line \_\_\_\_\_ right side  
wrong side  
of binding of fabric

1e

...then complete the binding by turning binding over  
the cut edge of the fabric, and edgestitching the remaining  
edge into place.

stitch along this line \_\_\_\_\_  
wrong side  
of fabric

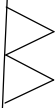
SIZE 26  
SIZE 24  
SIZE 22  
SIZE 20  
SIZE 18  
SIZE 16  
SIZE 14  
SIZE 12  
SIZE 10  
SIZE 8  
SIZE 6



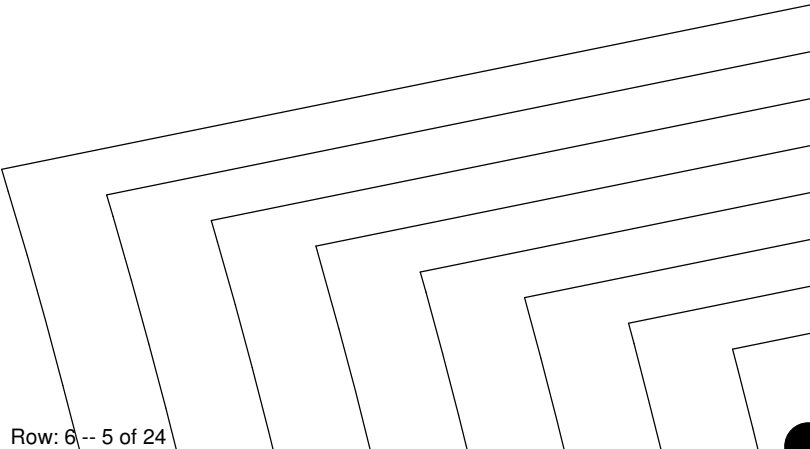
*How*



8



|  |
|--|
|  |
|  |
|  |
|  |
|  |
|  |
|  |
|  |
|  |
|  |



SIZE 26

SIZE 24

SIZE 22

SIZE 20

SIZE 18

SIZE 16

SIZE 14





20

SIZE 26

SIZE 24

SIZE 22

SIZE 20

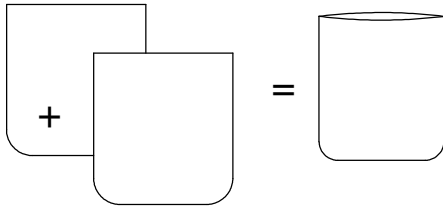
SIZE 18

# instructions page 2 of 2

2a

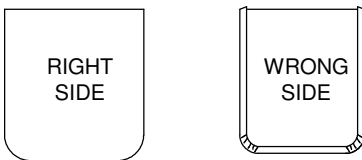
If you are lining your pockets, join the pocket to the pocket lining along the side and bottom edges.

Clip the seam allowances, press the seams open and turn the pocket out; press flat.



2b

If you are not lining your pockets, simply press the side and bottom edges under 3/8" or 1cm.



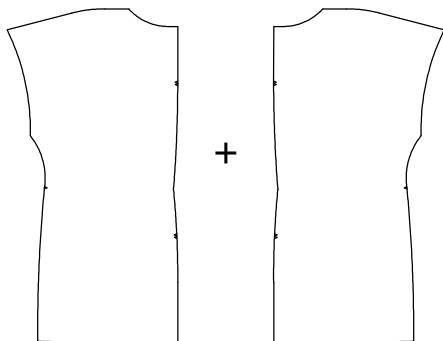
2c

For lined OR unlined pockets, bind the top edge of the pockets and press flat.

Pin the pockets onto the vest fronts (follow the positions marked on the pattern) and you're ready to construct the vest!

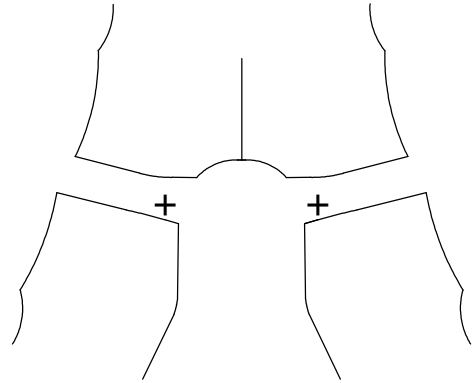
3

Join the vest backs along the center back seam; press the seam open.



4

Join the vest fronts to the vest back along the shoulder seams; press the seams open.



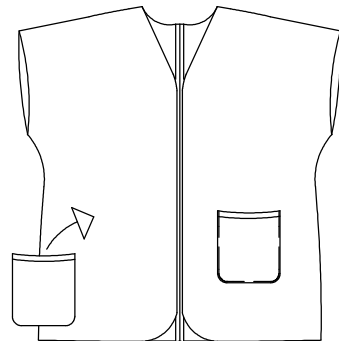
5

Join the vest fronts to the vest back at the side seams, and press the seams open.

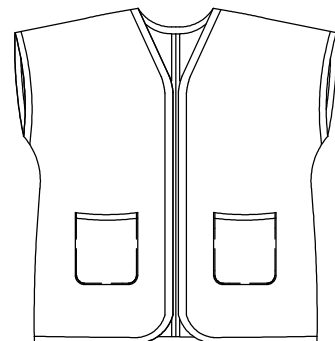
6

Try on the vest, and check the pocket positions; change the pocket positions if you wish.

All good? Go ahead and topstitch the pockets into place, sewing about 1/8"/2mm away from the pocket edge.



7 Complete the vest by binding the armhole/sleeve openings, and the neckline/center front/hemline. Press flat.



Can you say, D-O-N-E done!

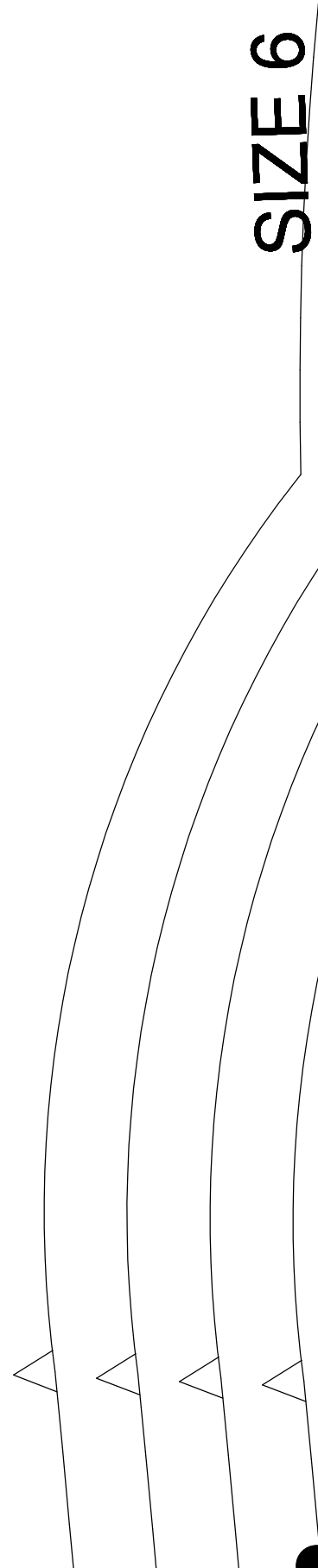
3

SIZE 26  
SIZE 24  
SIZE 22  
SIZE 20  
SIZE 18  
SIZE 16  
SIZE 14  
SIZE 12  
SIZE 10  
SIZE 8  
SIZE 6

*Patterns* & fabric.com

Exclusive free download  
baby, it's cold outside vest  
back  
cut 1 pair in fabric

SIZE 6



SIZE 8

SIZE 6

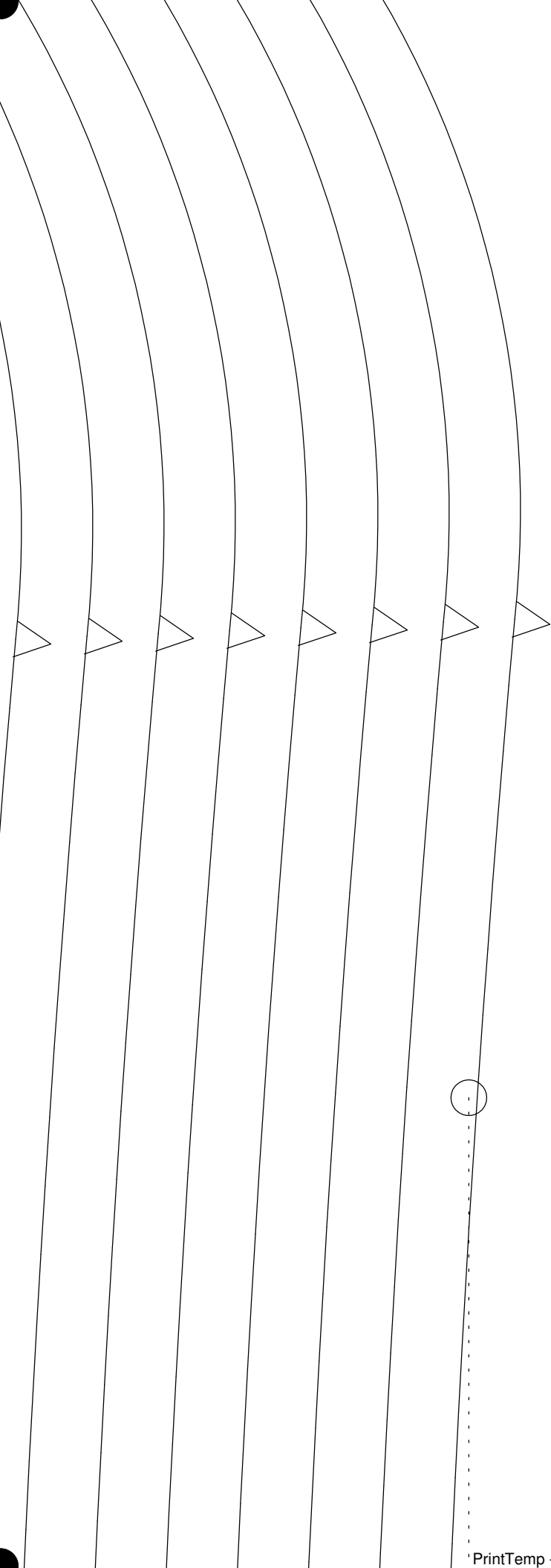
12

SIZE 26  
SIZE 24  
SIZE 22  
SIZE 20  
SIZE 18  
SIZE 16  
SIZE 14  
SIZE 12  
SIZE 10  
SIZE 8  
SIZE 6

SIZE 12  
SIZE 10  
SIZE 8  
SIZE 6

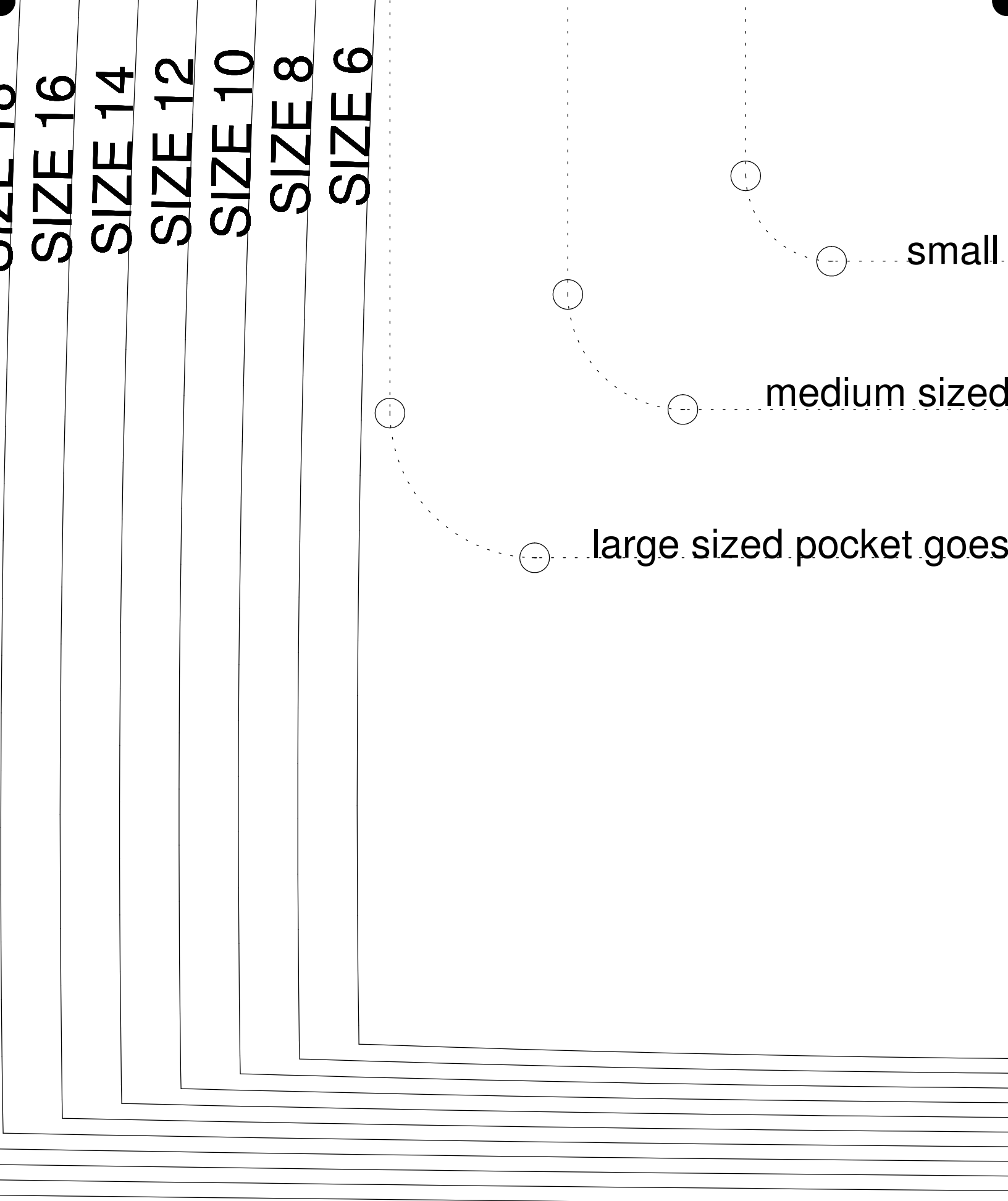
*Hot Patterns*

exclusive for  
baby, it's cool  
from  
cut 1 piece



suggest  
pocke  
positio





use this for sizes 22-24-26

use this for sizes 14-16-18-20

use this for sizes 6-8-10-12

*Hot Patterns* & fabric.com

exclusive free download

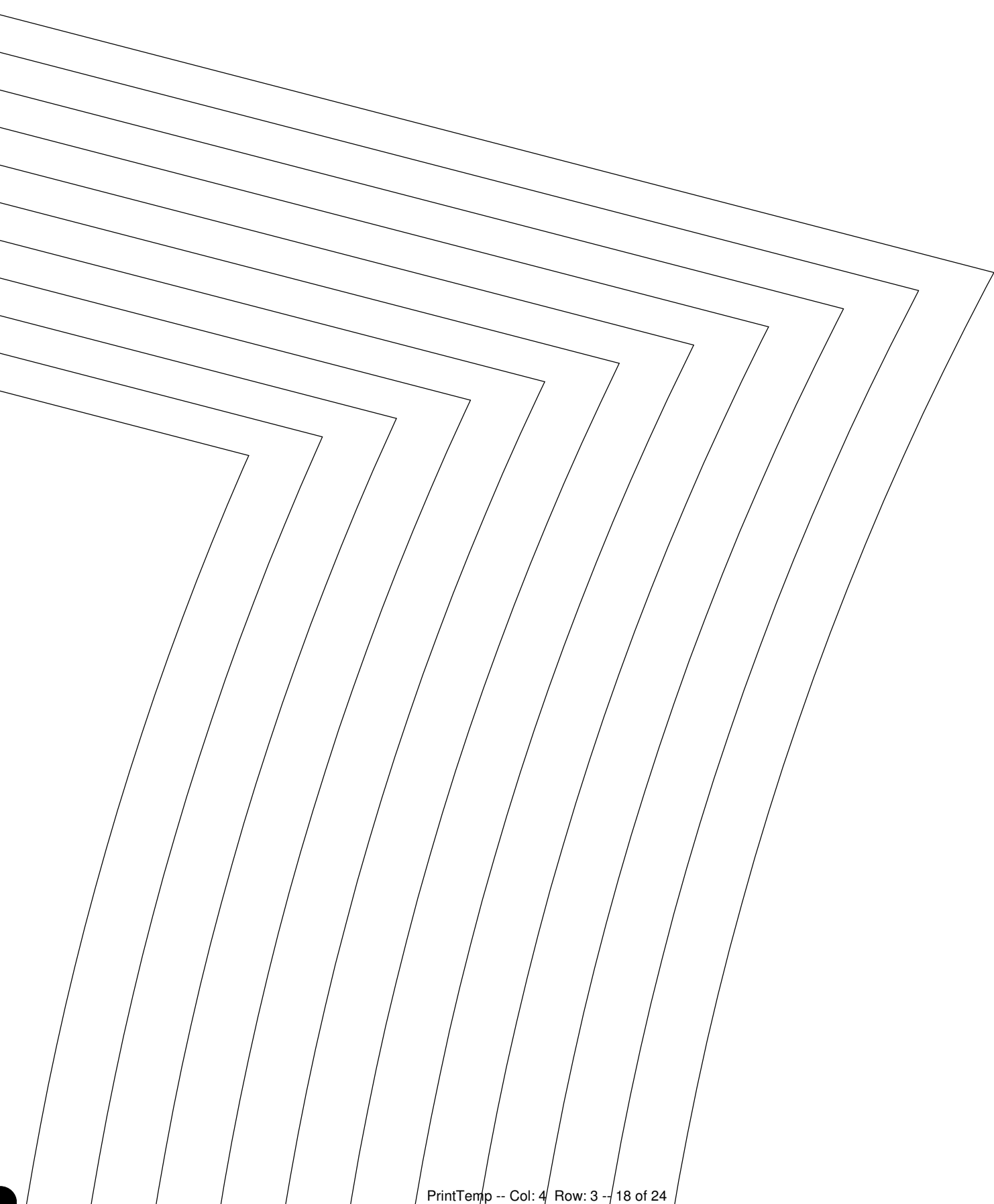
baby, it's cold outside vest

patch pocket

cut 1 pair in fabric

OPTIONAL

cut 1 pair in lining



|         |  |
|---------|--|
| SIZE 8  |  |
| SIZE 10 |  |
| SIZE 12 |  |
| SIZE 14 |  |
| SIZE 16 |  |
| SIZE 18 |  |
| SIZE 20 |  |
| SIZE 22 |  |
| SIZE 24 |  |
| SIZE 26 |  |

SIZE 26

SIZE 24

SIZE 22

SIZE 20

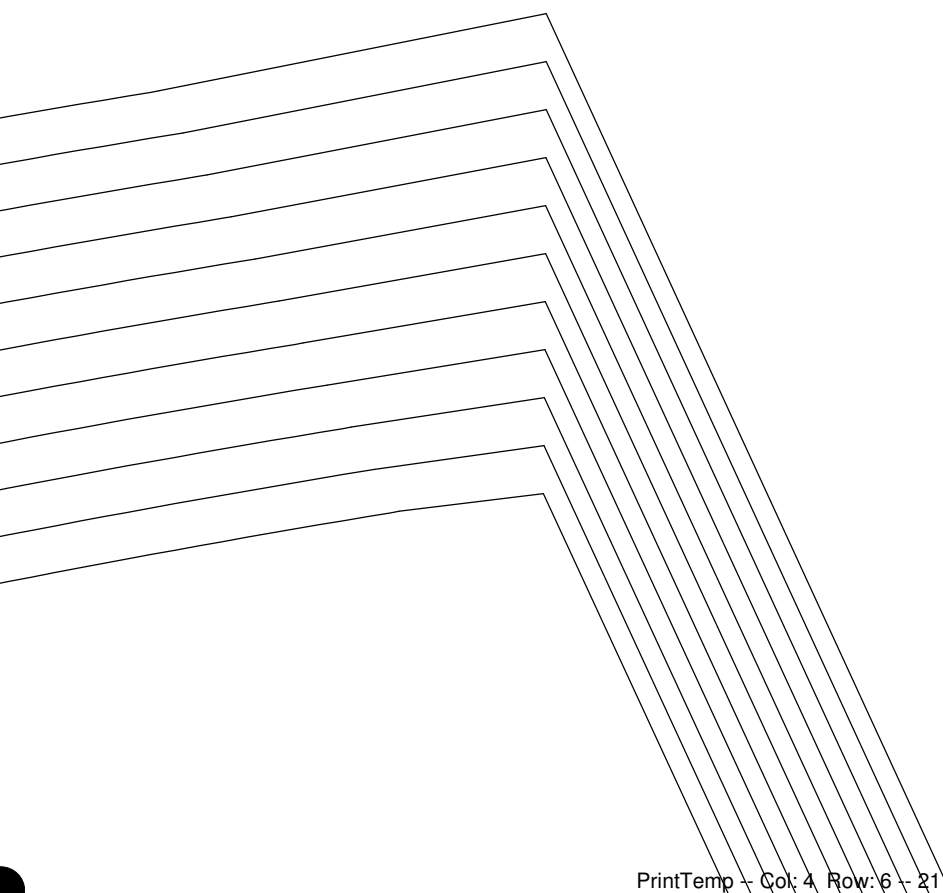
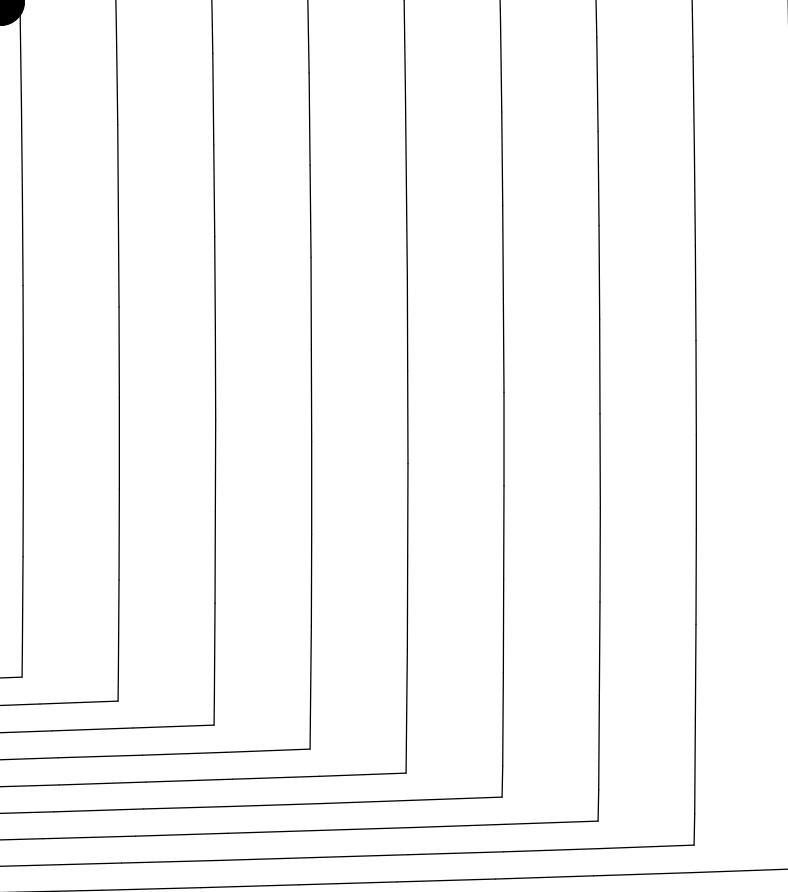
SIZE 18

SIZE 16

SIZE 14

SIZE 12

SIZE 10



SIZE 26  
 SIZE 24  
 SIZE 22  
 SIZE 20  
 SIZE 18  
 SIZE 16  
 SIZE 14  
 SIZE 12  
 SIZE 10  
 SIZE 8  
 SIZE 6

& fabric.com

ree download  
 d outside vest  
 ont  
 ir in fabric





... sized pocket goes here

... pocket goes here

... here

