



Argyle Cloche

Exclusively for Fabric.com

www.gruenetree.com

The Goods:

Needles: US 7, 24 in. Cable needles

Yarn: Tahki Coast 1 ball each Grey (B), Teal (C) & Aqua (A), 55% wool, 45% cotton

Gauge: 19 sts by 26 rows in 4 x 4 in.

Finished measurements: Fits Adult Woman

Notes: DD~ Slip 2 sts knitwise as to knit together, k1, pass slipped sts over knitted st.

Keep your sts loose and spread out while knitting fair isle to prevent puckering.



Cast on 110 sts with Yarn A and join to knit in the Round- being careful not to twist

R1: Purl

Knit 2 rounds

R4: Knit 52 sts, turn & purl 48 sts, turn & knit 44 sts, turn & purl 38 sts, turn & knit the remainder of the round

R5: Knit

* tip- If you find gaps where you returned your work, you can M1 and knit 2 together to fill the gaps.*

R6: Knit

Use the argyle chart for the next 22 rounds

Knit 8 more rounds using Yarn A then begin decreases.

Decrease R1: *k 8, DD; repeat to the end of the round

DR2 and all even rounds: Knit

DR3: *k 6, DD; repeat to the end of the round

DR5: *k 4, DD; repeat to the end of the round

DR7: *k 2, DD; repeat to the end of the round

DR9: *DD; repeat to the end of the round

Break yarn and weave through remaining sts. Weave in ends and block to finish.

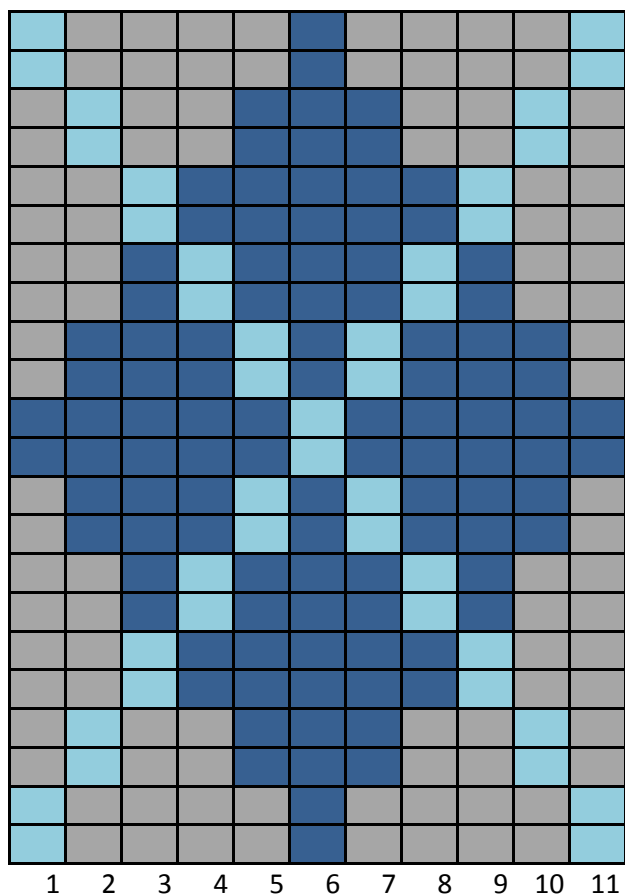
Argyle Cloche

Copyright Tara Miller, Gruenetreer 2010

www.gruenetreer.com

All rights reserved

Not for commercial use



- 1
- 2
- 3
- 4
- 5
- 6
- 7
- 8
- 9
- 10
- 11
- 12
- 13
- 14
- 15
- 16
- 17
- 18
- 19
- 20
- 21
- 22

Chart for Argyle Cloche Designed by Tara
 Miller for Fabric.com www.gruenetree.com
 Copyright Tara Miller 2011